



Which Way Home (2009) *Alberta Premiere*

Screening: Friday Nov. 20, 2009 9:15 pm - River Park Church Auditorium, 3818 -14A Street SW

Length: 90 minutes

Director: Rebecca Cammisa

Film Website: <http://whichwayhome.net/>

Trailer: <http://www.youtube.com/watch?v=1wz1ipdhCc8>

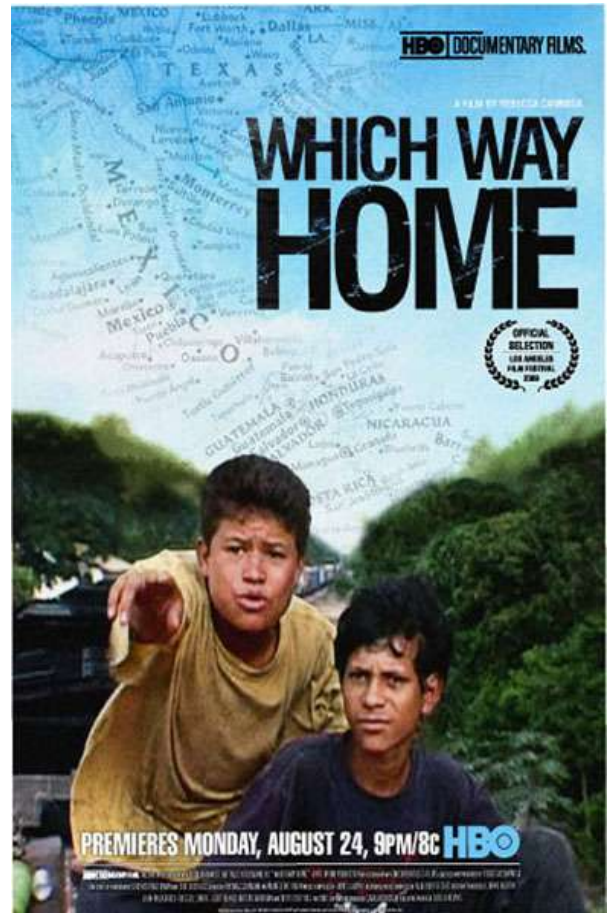
Stills: None available

Summary: Which Way Home shows the personal side of immigration through the eyes of children who face harrowing dangers with enormous courage and resourcefulness as they endeavor to make it to the U.S. The film follows several unaccompanied child migrants as they journey through Mexico en route to the U.S. on a freight train they call “The Beast.”

“Sister Helen” tracks the stories of children like Olga and Freddy, nine-year old Hondurans who are desperately trying to reach their families in Minnesota, and Jose, a ten-year-old El Salvadoran who has been abandoned by smugglers and ends up alone in a Mexican detention center, and focuses on Kevin, a canny, streetwise 14-year-old Honduran, whose mother hopes that he will reach New York City and send money back to his family. These are stories of hope and courage, disappointment and sorrow. They are the ones you never hear about – the invisible ones.

Recognition:

- Screened, Tribeca Film Festival 2009
- Director awarded development support from the Sundance Documentary Fund, HBO, the Wellspring Foundation, and the William J. Fulbright Fellowship in Filmmaking



Conversation Leader: Roland Vanderburg is the International Program Director for CAUSE Canada, a twenty-five year old community development organization based in Canmore, AB, with programs in Central America and West Africa.

He lived in Latin America for twelve years, ten of which were in Central America (El Salvador, Nicaragua and Guatemala). Roland’s wife is from El Salvador, and no fewer than three relatives have “taken the train” north. Mr. Vanderburg has an economics degree, and a Masters Degree in community development and microfinance from Eastern University in Pennsylvania.